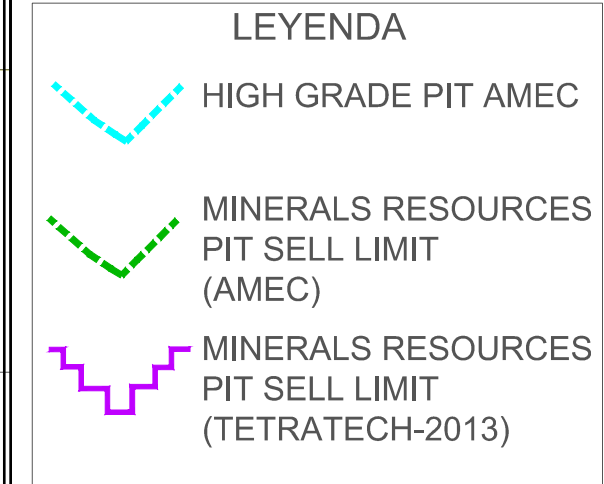
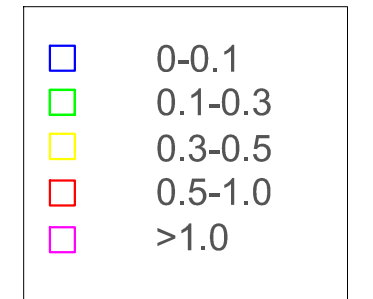
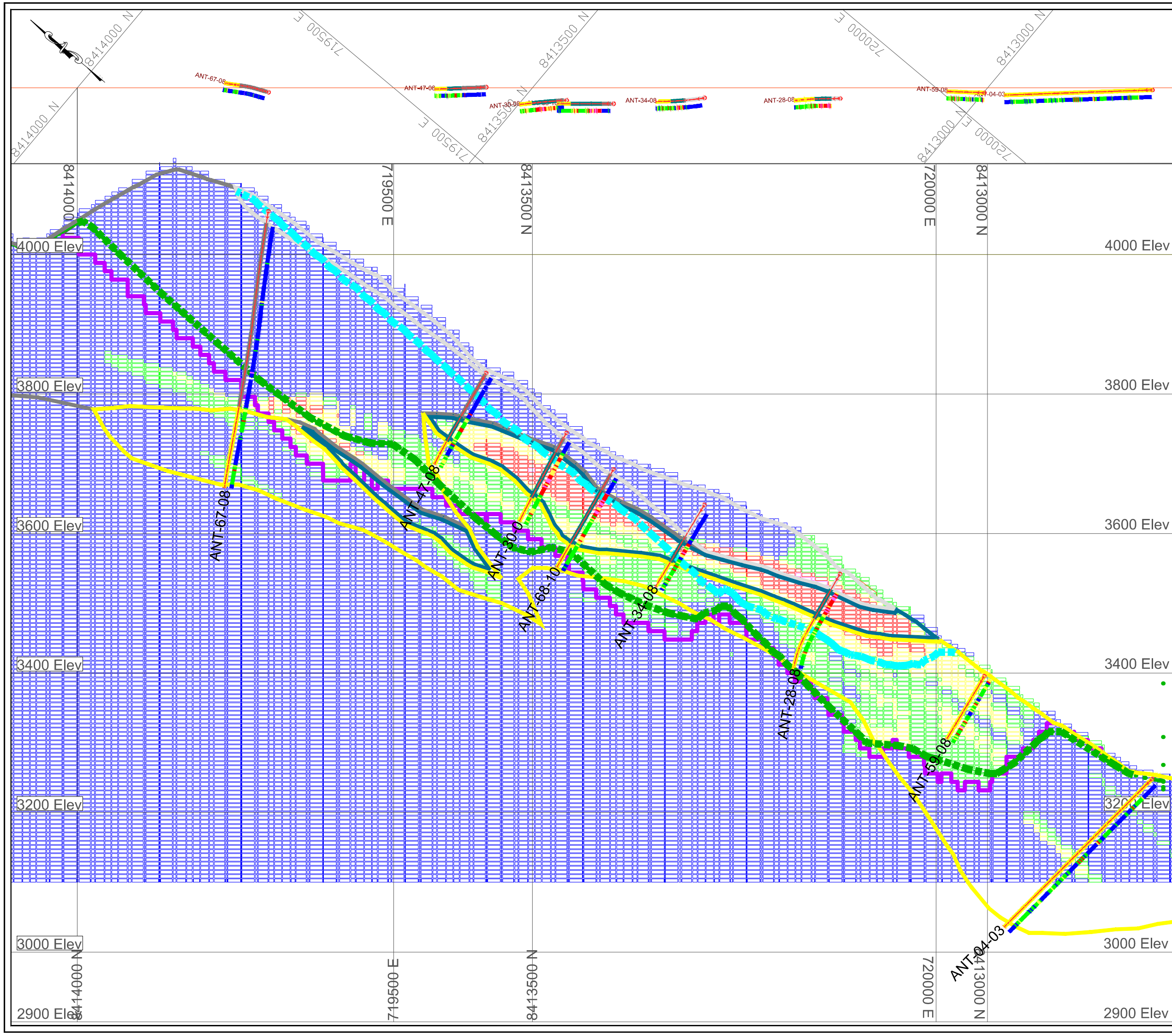
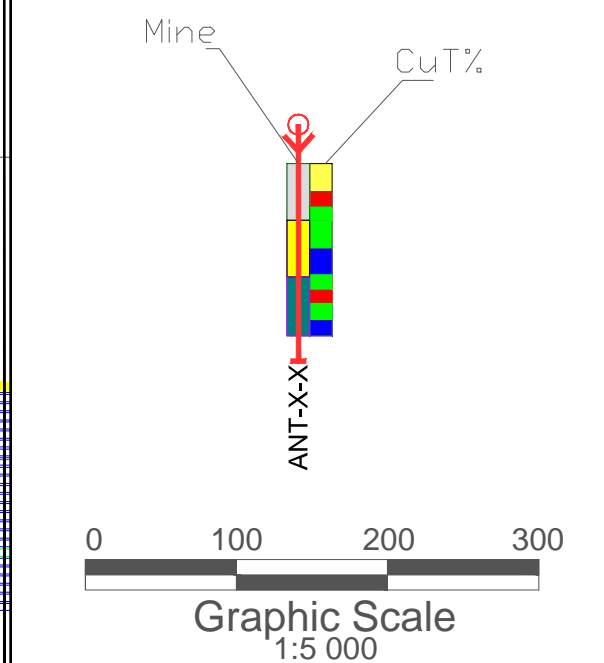


BLOCK MODEL (250W)



| ZONE | MINERALIZATION | |
|------|----------------|-------------------|
| | COV | Overburden |
| | EL | Leach Capping |
| | SE | Chalcocite Zone |
| | SP | Sulphides Primary |



| | | | |
|---|--|---|--|
| PANORO APURIMAC S.A. | | NORO MINERALS LTD | |
| Proyecto: ANTILLAS | | Av. Pardo y Allaga N°699 - Of. 601B San Isidro | |
| Descripción: BLOCK MODEL (LINE 250W) | | Telf. 62 855778 Fax-Anexo 6285979 http://www.panoro.com | |

| | | | | |
|---------------|-----|--------|---|--------|
| A.S | E.M | E.M | Geología | |
| PSAD 56 - 18S | A1 | 1:5000 | ANTINT-SECT-L250W-BM_05112013 | AN-L61 |
| Nov13 | 01 | | Z:\Geologia\PA_Proyectos\1_Antillas\Data_2013\12d\9111_Co2\Secciones\250w\Co2 | |