

South Pit SECTION 5W

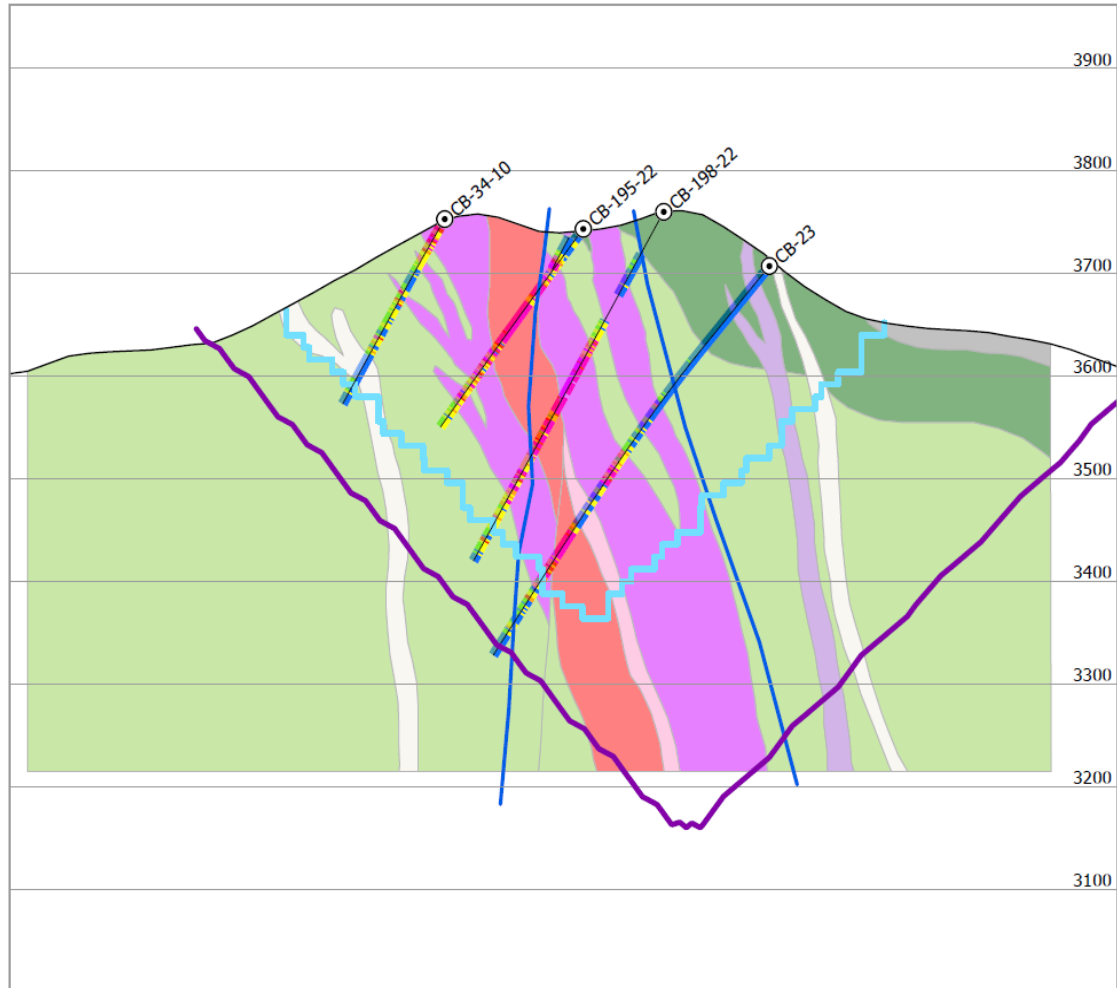
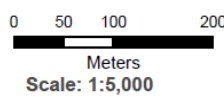
Lithology

- COV Overburden
- QMP1 Quartz Monzonite Early
- QMP2 Quartz Monzonite Intermineral
- QMP3 Quartz Monzonite Late
- DIO Diorite
- MZN1 Monzonite
- LAT2 Latite
- ANE Andesite

Legend

- Drill Hole Executed
- PEA Pit
- Resources Pit
- Fault

ASSAY_ddh Cu %	ASSAY_ddh Au g/t												
<table border="0" style="width: 100%;"> <tr><td style="width: 20%;"> <0.01</td></tr> <tr><td> 0.1-0.2</td></tr> <tr><td> 0.2-0.3</td></tr> <tr><td> 0.3-0.4</td></tr> <tr><td> 0.4-0.5</td></tr> <tr><td> >0.5</td></tr> </table>	 <0.01	 0.1-0.2	 0.2-0.3	 0.3-0.4	 0.4-0.5	 >0.5	<table border="0" style="width: 100%;"> <tr><td style="width: 20%;"> <0.01</td></tr> <tr><td> 0.1-0.2</td></tr> <tr><td> 0.2-0.3</td></tr> <tr><td> 0.3-0.4</td></tr> <tr><td> 0.4-0.5</td></tr> <tr><td> >0.5</td></tr> </table>	 <0.01	 0.1-0.2	 0.2-0.3	 0.3-0.4	 0.4-0.5	 >0.5
 <0.01													
 0.1-0.2													
 0.2-0.3													
 0.3-0.4													
 0.4-0.5													
 >0.5													
 <0.01													
 0.1-0.2													
 0.2-0.3													
 0.3-0.4													
 0.4-0.5													
 >0.5													



PANORO APURIMAC S.A.

Project: **COTABAMBAS**

Description: **Lithology**

South Pit SECTION 5W

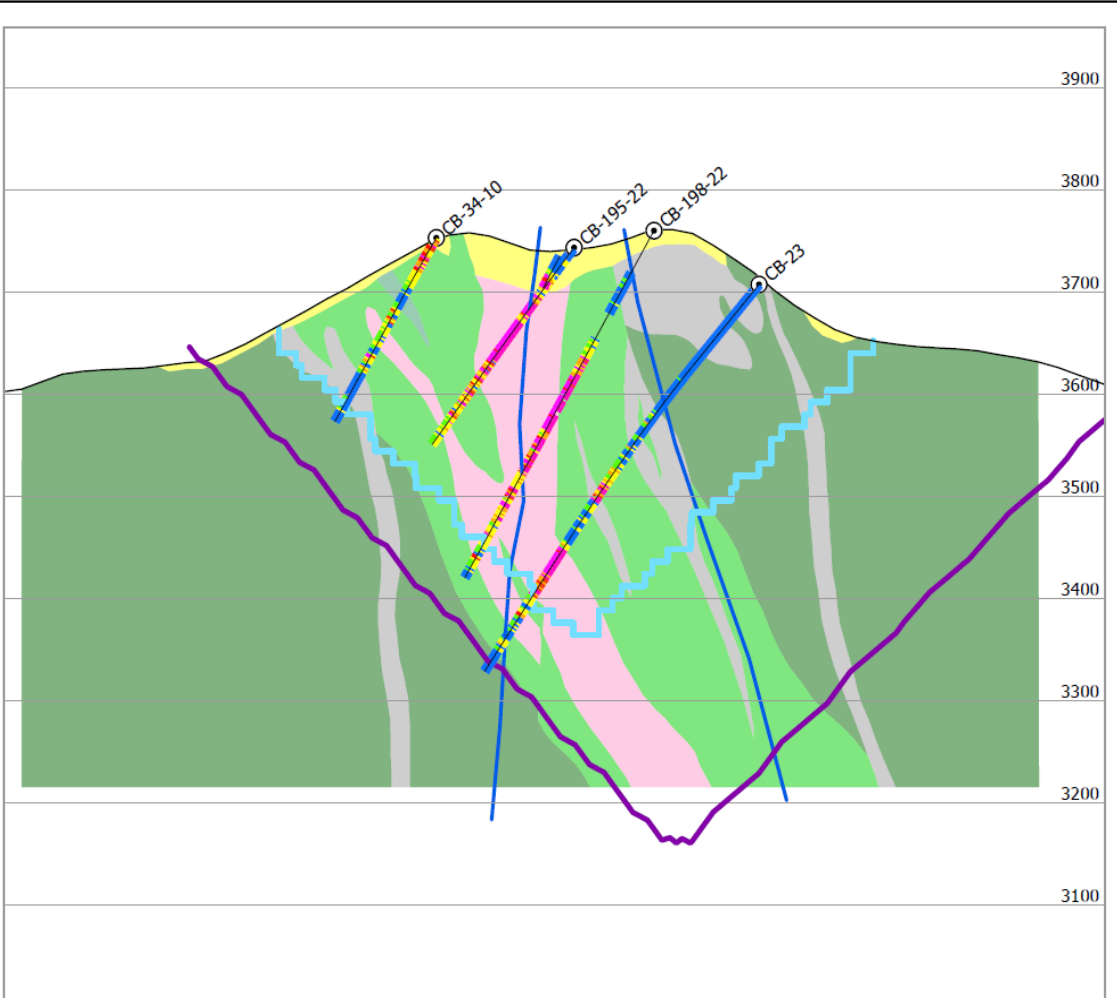
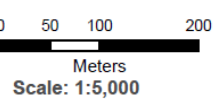
Alteration

- ARG Argillic Supergene
- POT1 Potassic Alteration (Bio-sec-mag)
- POT2 Potassic Alteration (Ort-Bio-sec-mag)
- PRO1 Propylitic Alteration (Chl-mag-Alb-cal±Py)
- PRO2 Propylitic Alteration (Chl-epi)
- SCC Chlorite-Sericite (Ser/ill-chl-arc-hem)
- PHY Phyllic Alteration (Ser-arc-sil)

Legend

- Drill Hole Executed
- PEA Pit
- Resources Pit
- Fault

ASSAY_ddh Cu %	ASSAY_ddh Au g/t												
<table border="0" style="width: 100%;"> <tr><td style="width: 20%;"> <0.01</td></tr> <tr><td> 0.1-0.2</td></tr> <tr><td> 0.2-0.3</td></tr> <tr><td> 0.3-0.4</td></tr> <tr><td> 0.4-0.5</td></tr> <tr><td> >0.5</td></tr> </table>	 <0.01	 0.1-0.2	 0.2-0.3	 0.3-0.4	 0.4-0.5	 >0.5	<table border="0" style="width: 100%;"> <tr><td style="width: 20%;"> <0.01</td></tr> <tr><td> 0.1-0.2</td></tr> <tr><td> 0.2-0.3</td></tr> <tr><td> 0.3-0.4</td></tr> <tr><td> 0.4-0.5</td></tr> <tr><td> >0.5</td></tr> </table>	 <0.01	 0.1-0.2	 0.2-0.3	 0.3-0.4	 0.4-0.5	 >0.5
 <0.01													
 0.1-0.2													
 0.2-0.3													
 0.3-0.4													
 0.4-0.5													
 >0.5													
 <0.01													
 0.1-0.2													
 0.2-0.3													
 0.3-0.4													
 0.4-0.5													
 >0.5													



PANORO APURIMAC S.A.

Project: **COTABAMBAS**

Description: **Alteration**